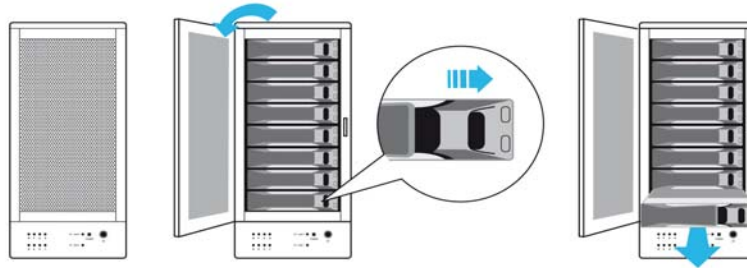


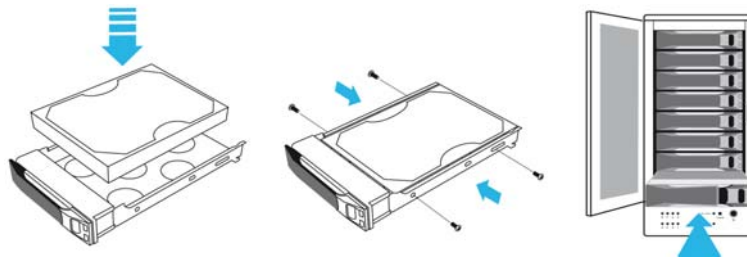
# TR81-B Quick Installation Guide

## Hard Drive Installation

1. Open the front hard drive panel of the unit.
2. Remove the hard drive trays by pushing the silver tray tab to the right and releasing the tray handle.

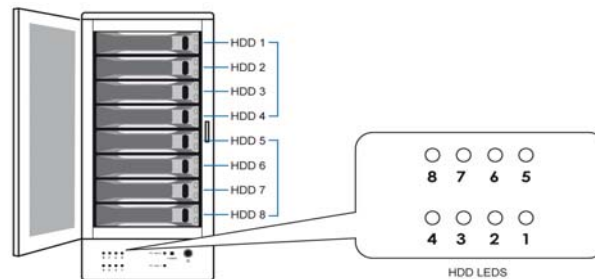


3. Install each hard drive by placing them into the hard drive trays and securing them on both sides with the included screws.
4. Place the trays back into the unit and lock them in place by pushing the tray handles in.
5. Close the front hard drive panel.

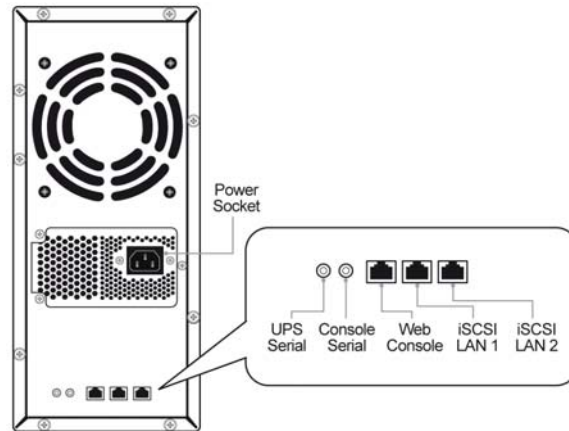


## Hard Drive Locations & LED Indicators

Hard drive data access LEDs are located on the bottom of the front panel. The LEDs flash green when the hard drives are being accessed.



## Unit Back Panel



## Management Methods

There are three management methods to manage EliteRAID and TowerRAID iSCSI Series, describe in the following:

### Web GUI

EliteRAID and TowerRAID iSCSI Series support graphic user interface to manage the system. Be sure to connect LAN cable. The default setting of management port IP is DHCP.

Type the IP address in the web browser:

Click any function at the first time; it will pop up a dialog to authenticate current user.

Login name: admin

Default password: 0000

Or login with read-only account which only allows reading the configuration and cannot change setting.

Login name: user

Default password: 1234

### Console Serial Port

Use NULL modem cable to connect console port.

The console setting is baud rate: 115200, 8 bits, 1 stop bit, and no parity.

Terminal type: vt100

Login name: admin

Default password: 0000

### Remote Control – Secure Shell

SSH (secure shell) is required for controllers to remote login. The SSH client software is available at the following web site:

SSHWinClient WWW: <http://www.ssh.com/>

Putty WWW: <http://www.chiark.greenend.org.uk/>

Host name: 192.168.0.1 (Default IP address: 192.168.0.1.)

Login name: admin

Default password: 0000