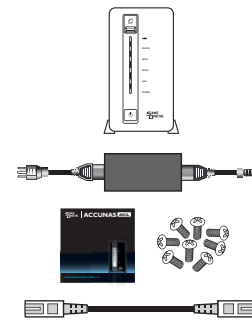




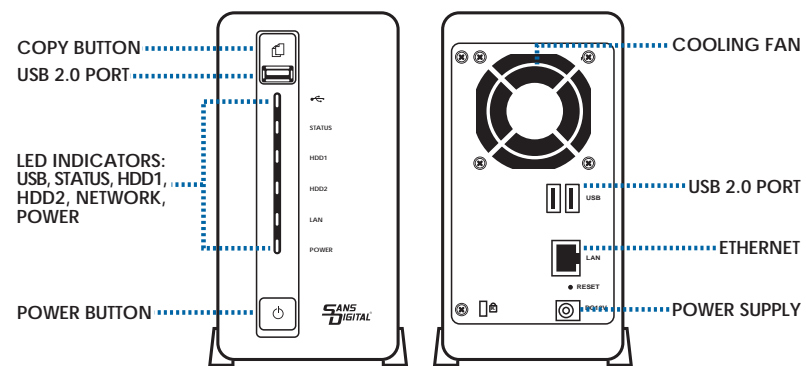
Package Contents

- Included**
- AN2L1
 - Power Adapter1
 - CD / Manual1
 - Screws1 SET
 - Ethernet Cable1

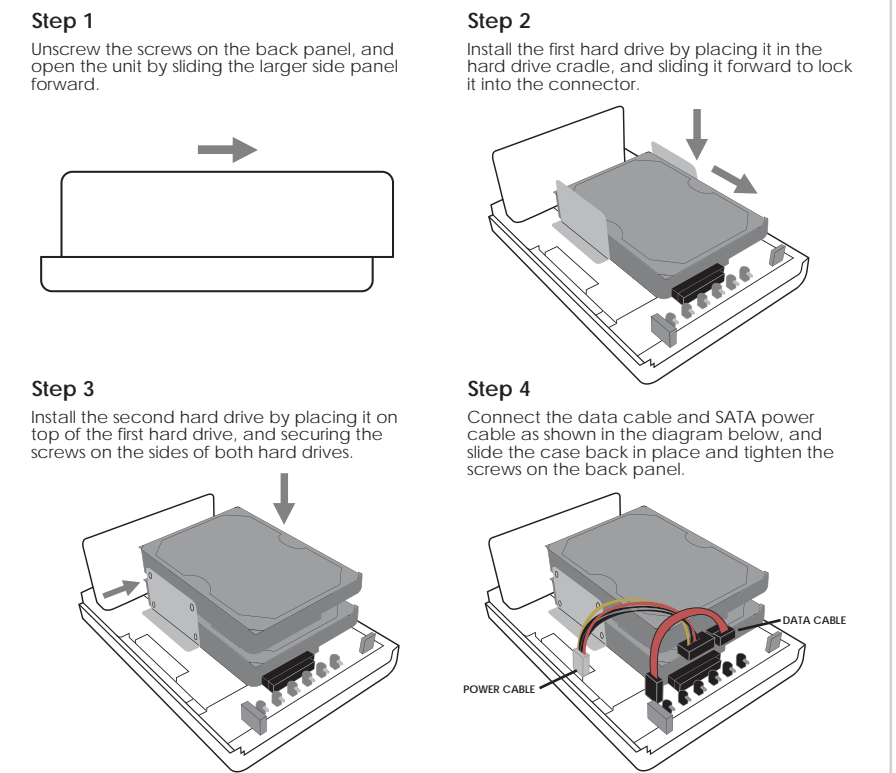
(Please contact us in case of missing or damaged items)



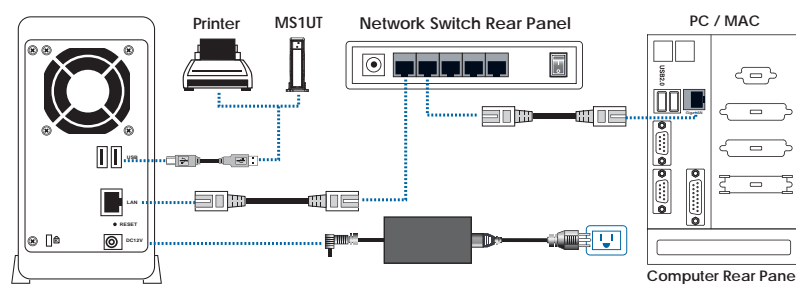
Hardware Diagrams



Installing Hard Drives



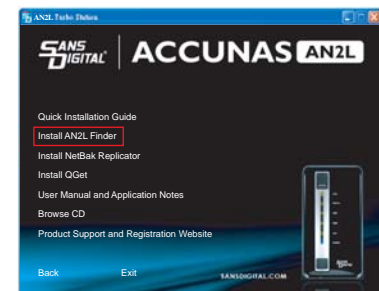
Hardware Connection



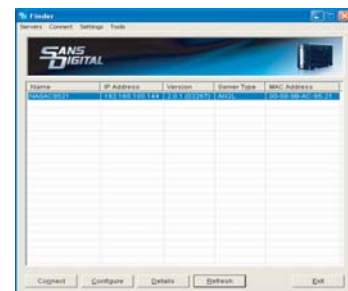
System Default Settings: **Network Setting: DHCP Username: admin Password: admin**

System Configuration

- 1) Insert the AN2L CD-ROM.
 - For MAC users install MacWizard.dmg, and then run Quick Install Wizard.
 - For PC users, install SD Finder to continue.

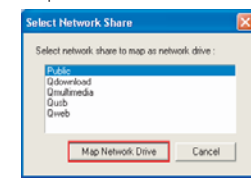
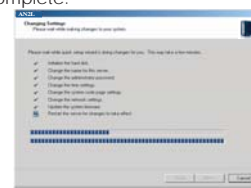
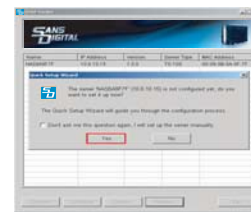


- 2) After the installation, SD Finder will run automatically.
 - Note: If using Windows XP SP2, please click "unblock" to continue.



System Configuration (Continued)

- 3) SD Finder will auto detect the AN2L on the network. Click "Yes" to continue.
- 4) Type in the administration password.
 - Follow the on-screen instructions to complete the configuration. Please wait until all changes are applied.
 - Note:** RAID configuration may take more than 20 minutes depending on the size of the hard drives.
- 5) The AN2L unit will restart after the installation is complete.
- 6) Click Finish to finalize the setup.
- 7) **Windows only:** AN2L provides several default folders for sharing and access. Please select the share folder you would like to map on your computer.
- 8) You could now connect to the administration page to setup the user, share folders and other network settings.



Other Sans Digital Products

- MS1UT**
 - 3.5" Hard Drive Enclosure with Removable Tray
 - Dual host interface: USB 2.0 and eSATA.
 - Supports High Performance SATA hard drives.
 - Ultra quiet operation.
 - Vertical placement stand included.
 - Durable aluminum housing.
 - Supports both Windows and Mac OS X.
- MS2U+ /MS2T+**
 - 2-Bay External RAID Enclosure
 - Supports JBOD mode.
 - USB 2.0 (MS2U+) and eSATA (MS2T+) interface.
 - Drive Interface: 3.5" x 2 SATA I/ SATA II hard drives.
 - Hot-swappable removable tray.
 - Supports the latest 1TB hard drive.
 - Hard disk, fan and temperature failure detectors.
- MS2UT+ /MS2UTN+**
 - 2-Bay External RAID Enclosure
 - Hardware RAID design, supporting RAID 0, 1, JBOD, RAID, SAFE33, and SAFE55, with eSATA and USB 2.0 interfaces.
 - Drive Interface: 3.5" x 2 SATA I/ SATA II hard drives.
 - Hot-swappable removable tray.
 - Data auto-rebuilding.
 - Hard drive, fan and temperature failure detectors.
- MS4B/MS4T/MS4UM**
 - 4-Bay External RAID Enclosure
 - Support JBOD for independent access up to four hard drives.
 - 1394b x 2 (MS4B), eSATA x 4 (MS4T), USB 2.0 & Port Multiplier (MS4UM).
 - Drive interface: 4 x 3.5" SATA I/ SATA II hard drives.
 - RAID supported in MS4B (RAID 0) and MS4UM (software RAID 0, 1, 0+1, 5, 5 + spare in Windows).
 - OS independent with plug and play capability.

T: 1.800.980.1988 E: INFO@SANSDIGITAL.COM W: WWW.SANSDIGITAL.COM