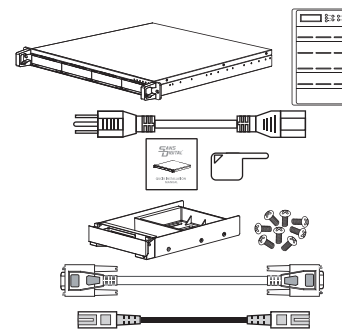




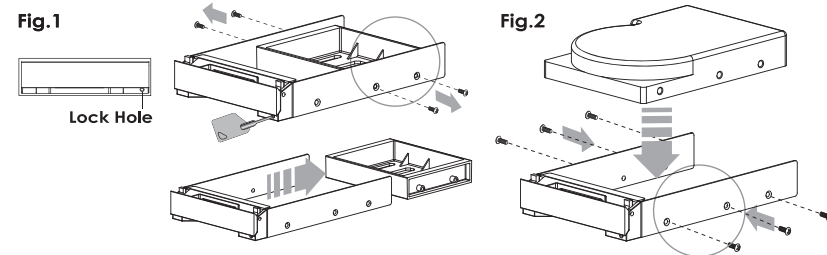
Package Contents

- ERI04I / MR4I..... 1
 - Power Cord..... 1
 - Manual..... 1
 - Hard Drive Tray Keys..... 2
 - Removable Tray Modules (Screws Included)... 4
 - RS232 Cable..... 1
 - Ethernet Cable..... 3
- (Please contact us in case of missing or damaged items)



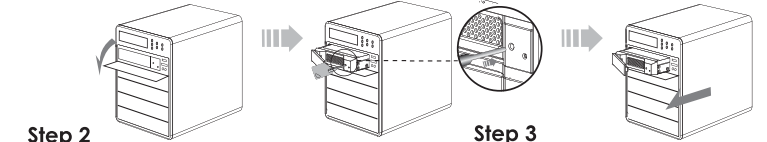
Installing a Hard Drive in the Removable Tray (ERI04I)

1. Press the key (included with this unit) into the lock hole located at the front of the tray. Pull handle and remove tray.
2. Demount the plastic tray protector by removing the screws in the illustration below (Fig.1).
3. Fasten the hard drive with the screws (included with this unit) in the corresponding locations (Fig.2). Place the tray with the mounted HDD back into the case.

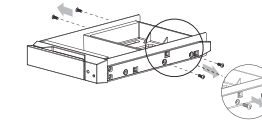


Installing a Hard Drive in the Removable Tray (MR4I)

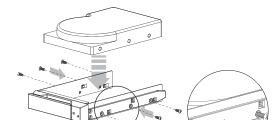
Step 1
Press the right button to open the tray faceplate. Press the key into the lock hole (located on front of the tray). Pull handle & remove tray.



Step 2
Dismount the plastic tray protector by removing the screws in the illustration below.

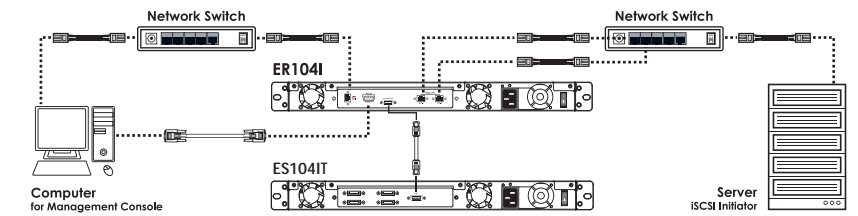


Step 3
Fasten the hard drive with screws in the corresponding locations.



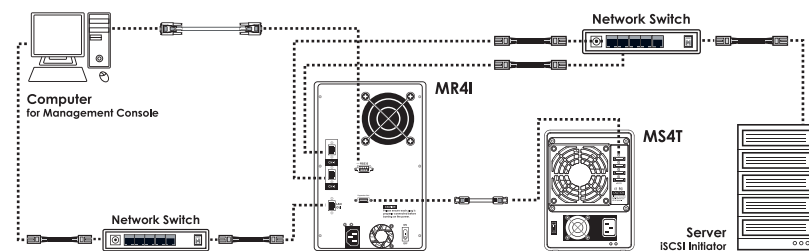
Step 4
Place the tray with the mounted HDD back into the case, and close the face plate.

Connecting the ERI04I to your Computer



NOTE: HDD Access LED will flash when data is accessed from the hard drive, only when HD is installed. Power LED will light blue when the power is on. Fan LED will light red when the internal temperature is higher than 60° C or when the fan fails.

Connecting the MR4I to your Computer



ERI04I / MR4I Default Settings

Management ethernet port network setting:

- IP Address:** 192.168.0.1
- Subnet:** 255.255.255.0
- Username:** admin
- Password:** 1234

To setup ERI04I / MR4I: connect the unit using Management IP, setup the Volume, setup iSCSI IP address and connect using iSCSI Initiator:

Step 1: The ERI04I / MR4I can be configured through 3 method: Build-in WEB GUI, SSH or RS232 Serial Interface.

- A. Build-In Web GUI:** open a web browser, and type in the IP address of the management Ethernet port.
- B. SSH:** open a SSH client software (Such as PuTTY), and type in the IP address of the management Ethernet port.
- C. RS232 Serial Interface:** open RS232 terminal program (such as HyperTerminal), using 152000, 8-N-1, VT100 and connect.

NOTE: If the default management IP address is not able to connect, you will need to either change the default IP address via RS232 or change your computer's IP address temporary. After you connected the management console, you can change the management IP under System -> IP address.

ERI04I / MR4I Default Settings (Continued):

Step 2: For quick configuration, use the "Quick Install" function. RAID 0, 1, 3, 5, and 6 will automatically use maximum available capacity.

A. Go to Quick Install.



B. Select the desired RAID level, click Next.



C. Select the Volume Size and LUN number, click Next.



D. Click Confirm to finish Quick Install.



Step 3: Once the volume is set, you will need to change the iSCSI's target IP address to meet your storage network.

A. Select Config iSCSI



B. Select NIC iSCSI Network Port IP, by clicking



Step 4: You can now connect to ERI04I / MR4I using iSCSI Initiator.

Other Sans Digital Products



- **3.5" Hard Drive Enclosure with Removable Tray**
- Dual Host Interface: USB 2.0 and eSATA.
- Supports High Performance SATA Hard Drives.
- Ultra Quiet Operation.
- Vertical Placement Stand Included.
- Durable Aluminum Housing.
- Both Mac OS X and Windows Supported.



- **2-Bay External RAID Enclosure**
- RAID Design, supports RAID 0, 1.
- eSATA and USB 2.0 (MS2UT) or Firewire 800 & USB 2.0 (MS2UB).
- Drive Interface: 3.5" x 2 SATA I/ SATA II Hard Drives.
- Hot-Swappable Removable Tray.
- Data Auto-Rebuilding.
- Hard Disk, Fan and Temperature failure detectors.



- **4-Bay External RAID Enclosure**
- Support JBOD for independent access up to four hard drives.
- 1394b x 2 (MS4B), eSATA x 4 (MS4T), USB 2.0 & Port Multiplier (MS4UM).
- Drive Interface: 4 x 3.5" SATA I/ SATA II Hard Drives.
- RAID supported in MS4B (RAID 0) and MS4UM (software RAID 0, 1, 0+1, 5, 5 + spare in Windows).
- OS independent with plug and play capability.



- **5-Bay External RAID 6 Enclosure**
- Hardware RAID Design, supports RAID 0, 1, 0+1, 3, 5, 6, JBOD & Hot Spare Disk.
- SCSI Ultra 320 (MR5S1)/ USB 2.0, Firewire 800 & eSATA (MR5CT1).
- Drive Interface: 5 x 3.5" SATA I / SATA II Hard drives.
- Hot-Swappable Tray Design.
- Hard disk, fan and temperature failure detectors.

T: 1.800.980.1988 F: 1.562.949.3328 E: INFO@SANSDIGITAL.COM W: WWW.SANSDIGITAL.COM