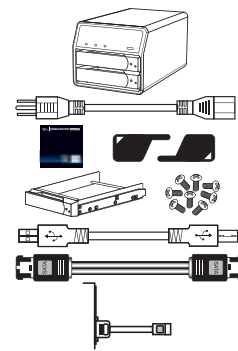


SANS DIGITAL | **MOBILESTOR MS2UTN+(B)**

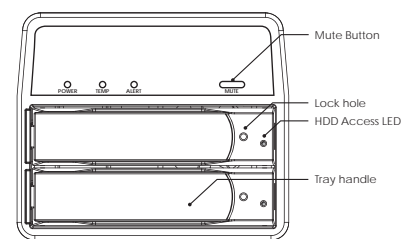
Package Contents

MS2UTN+ /MS2UTN+B 1
 Power Cord 1
 Manual 1
 HD Tray Keys 2
 Removable Tray Modules (Screws Included) 2
 USB 2.0 Cable 1
 eSATA Cable 1
 SATA Bracket 1
 (Please contact Sans Digital in case of missing or damaged items.)

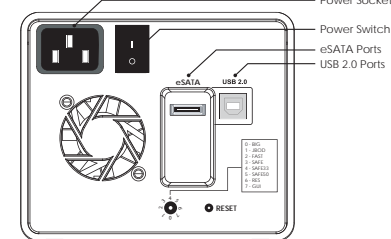


Hardware Diagram

Front



Back



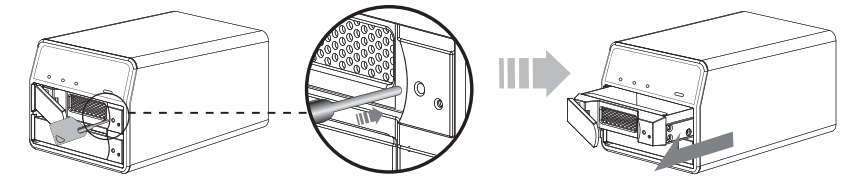
NOTE

1. Power LED turns on when the unit powers on.
2. Temperature LED turns on when the unit overheats (over 70 degrees Celsius).
3. Alert LED turns on when a hard drive fails.
4. Mute button turns off the alarm when unit overheats or when a hard drive fails.

Installing a Hard Drive in the Removable Tray Module

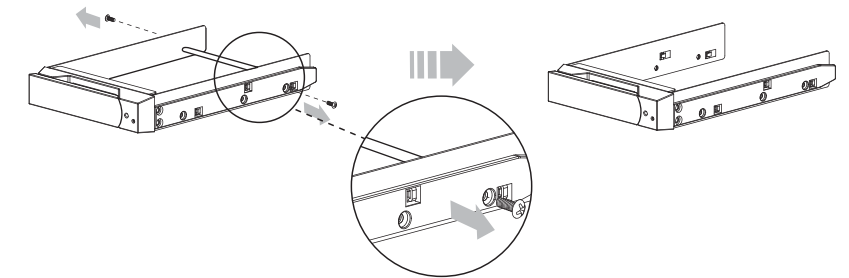
Step 1

Press the key into the lock hole (located on front of the unit). Pull handle & remove tray.



Step 2

Dismount the metal tray protector by removing the screws in the illustration below.



NOTE Please read carefully before installing hard drives:

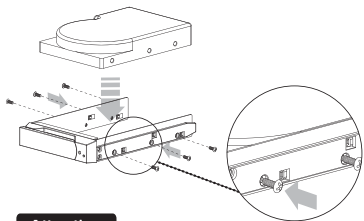
1. Using hard drives with the same brand name and capacity is highly recommended to achieve optimal performance. If the hard drives are different in capacity, the total capacity will equal to twice of the smaller drive's capacity.
2. New hard drives are highly recommended. A used hard drive has a higher defective rate, and a defective hard drive may cause RAID failure and loss of data.

QUICK INSTALLATION GUIDE v2.0

Installing a Hard Drive (Continued)

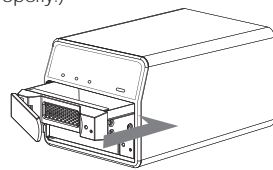
Step 3

Fasten the hard drive with screws in the corresponding locations.



Step 4

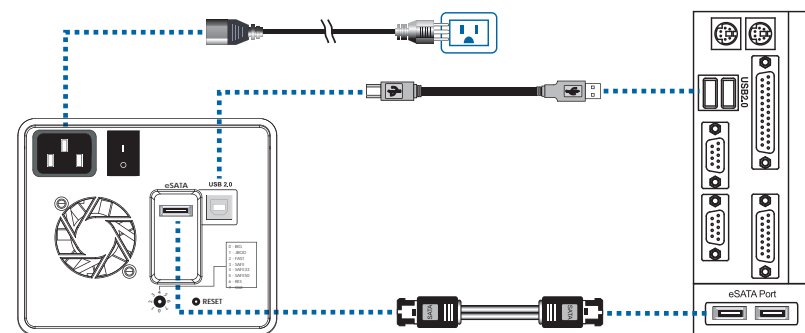
Place the tray with the mounted hard drive back into the case. (If the screws are not properly fastened the hard disk may be pushed towards the back of the unit and the tray handle will not open properly.)



Attention

- A new hard drive must first initialize, partition and format in the operating system before use.

Hardware Connection Diagram



RAID Setup



To set up RAID, turn the RAID dial located on the back panel to the desired RAID mode, then press "reset".

- 0 - BIG
- 1 - JBOD
- 2 - FAST
- 3 - SAFE
- 4 - SAFE33
- 5 - SAFE50
- 6 - RES
- 7 - GUI

BIG - Concatenation / spanning.
JBOD - Just a bunch of disk; bypass mode.
FAST - RAID 0
SAFE - RAID 1 and mirror.
SAFE33 - Creates two hard drive volumes where 1/3 of the volume is used for mirroring and the rest is used for Spanning (Big).
SAFE50 - Creates two hard drive volumes where 1/2 of the volume is used for mirroring and the rest is used for Spanning (Big).
RESERVED - N/A.
GUI - Configuration mode only (please download the software from www.sansdigital.com).

NOTE: JBOD, SAFE33, and SAFE50 requires port multiplier support in order to see two separate hard drives. Otherwise only the first of the two storage volumes is accessible.

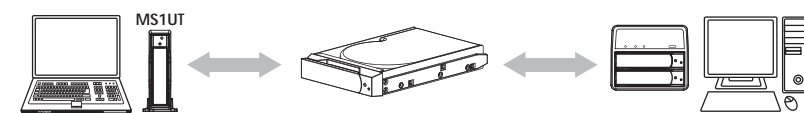
Hard Drive Tray LED RAID Indications

The HDD tray LED lights in a variation of blue, red, or purple depending on the RAID mode chosen.

- BLUE** - power on / idle
- FLASHING PURPLE** - accessing data
- ALTERNATING PURPLE & RED** - RAID rebuilding (solid PURPLE is the SOURCE)
- ALTERNATING RED / BLUE** - Hard not detected / RAID not initialized / drive failure

Optional Accessories

The optional removable hard drive tray is available through Sans Digital. For maximum flexibility, the removable hard drive tray is made to be interchangeable between other Sans Digital MobileSTOR and MobileRAID units.



Other Sans Digital Products



- **3.5" Hard Drive Enclosure with Removable Tray**
- Dual host interface: USB 2.0 and eSATA.
- Supports high performance SATA hard drives.
- Ultra quiet operation.
- Vertical placement stand included.
- Durable aluminum housing.
- Supports both Windows and Mac OS X.



- **2-Bay External RAID Enclosure**
- Supports JBOD mode.
- USB 2.0 (MS2U+) and eSATA (MS2T+) interface.
- Drive Interface: 3.5" x 2 SATA I/ SATA II hard drives.
- Hot-swappable removable tray.
- Supports the latest 1TB hard drive.
- Hard disk, fan and temperature failure detectors.



- **4-Bay External RAID Enclosure**
- Support JBOD for independent access up to four hard drives.
- 1394b x 2 (MS4B), eSATA x 4 (MS4T), USB 2.0 & Port Multiplier (MS4UM).
- Drive interface: 4 x 3.5" SATA I/ SATA II hard drives.
- RAID supported in MS4B (RAID 0) and MS4UM (software RAID 0, 1, 0+1, 5, 5 + spare in Windows).
- OS independent with plug and play capability.



- **5-Bay External RAID 6 Enclosure**
- Hardware RAID design, supports RAID 0, 1, 0+1, 3, 5, 6, JBOD & hot spare disk.
- SCSI Ultra 320 (MR5S1) / USB 2.0, Firewire 800 & eSATA (MR5CT1).
- Drive interface: 5 x 3.5" SATA I / SATA II hard drives.
- Hot-swappable tray design.
- Hard disk, fan and temperature failure detectors.

T: 1.800.980.1988 F: 1.562.949.3328 E: INFO@SANSDIGITAL.COM W: WWW.SANSDIGITAL.COM