

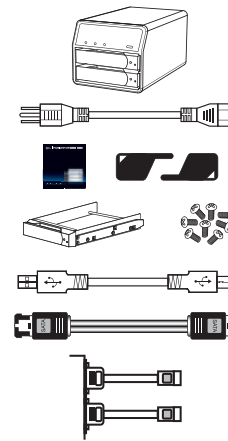
**SANS DIGITAL | MOBILESTOR MS2U+(B) | MS2TI+(B)**

**QUICK INSTALLATION GUIDE v1.0**

### Package Contents

<b>Included</b>	
MS2U+/MS2U+B/MS2T+/MS2T+B .....	1
Power Cord .....	1
Manual .....	1
HD Tray Keys .....	2
Removable Tray Modules (Screws Included) .....	2
<b>MS2U+/MS2U+B Only</b>	
USB 2.0 Cable .....	1
<b>MS2T+/MS2T+B Only</b>	
eSATA Cable .....	2
2 Port SATA Bracket .....	1

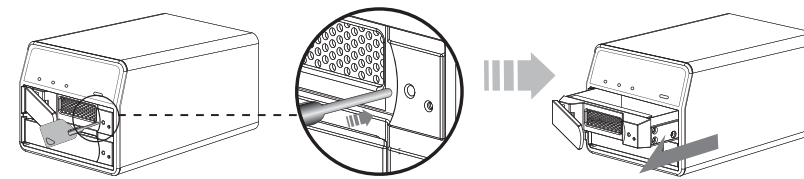
(Please contact us in case of missing or damaged items)



### Installing a Hard Drive in the Removable Tray Module

#### Step 1

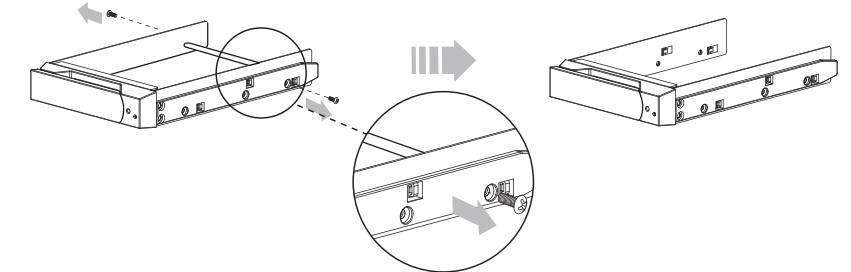
Press the key into the lock hole (located on front of the unit). Pull handle & remove tray.



### Installing a Hard Drive (Continued)

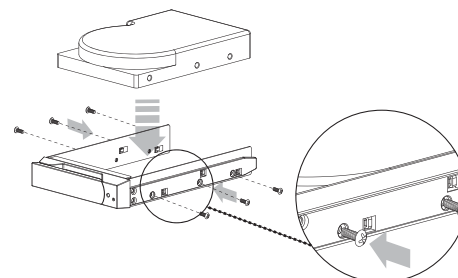
#### Step 2

Dismount the metal tray protector by removing the screws in the illustration below.



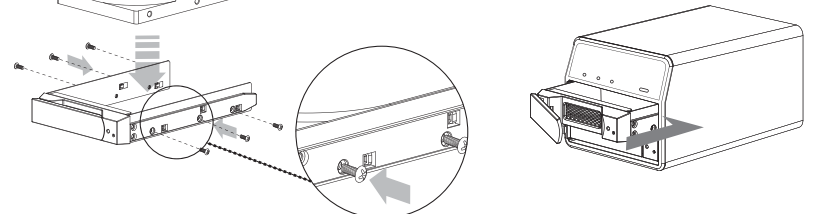
#### Step 3

Fasten the hard drive with screws in the corresponding locations.



#### Step 4

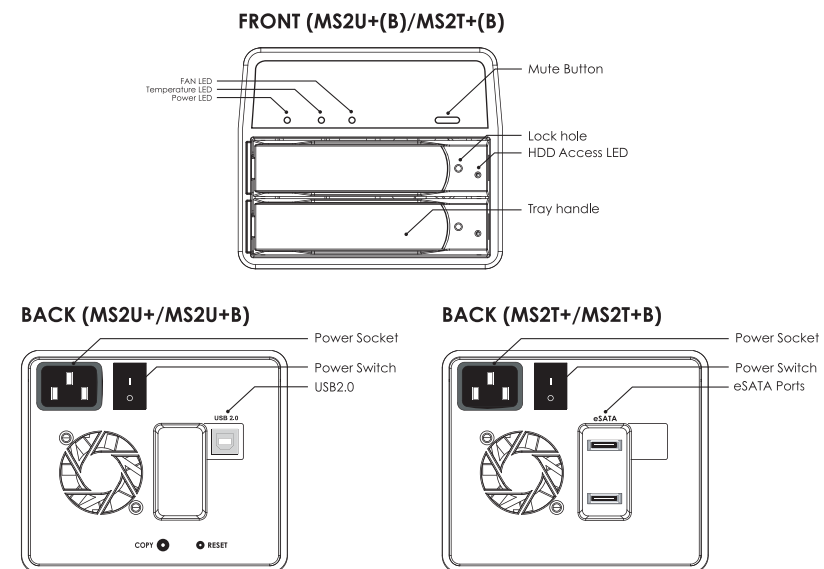
Place the tray with the mounted hard drive back into the case. (If the screws are not properly fastened the hard disk may be pushed towards the back of the unit and the tray handle will not open properly.)



#### Attention

• A new hard drive must first initialize, partition and format in the operating system before use.

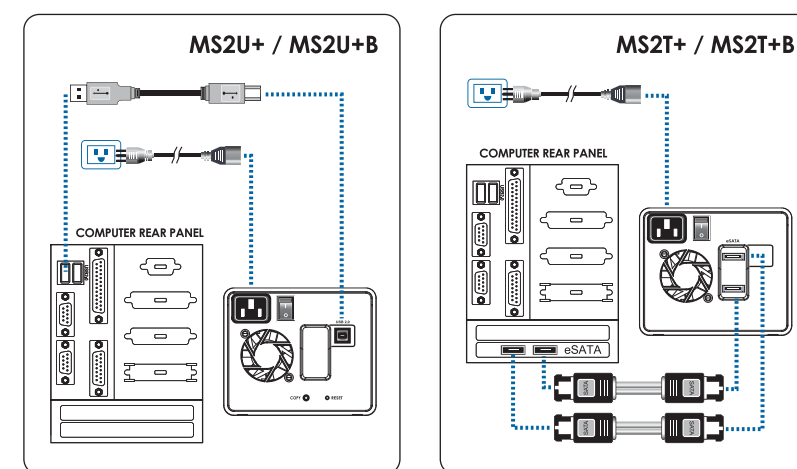
### Hardware Installation



#### NOTE

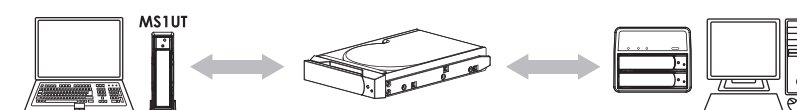
1. Power LED turns on when the unit powers on.
2. Temperature LED turns on when the unit overheats (over 70 degrees Celsius).
3. Fan LED turns on when the fan is under working condition.
4. Hard drive tray LED turns on when hard drive is accessing data.
5. Mute button turns off the alarm when unit overheats.
6. One touch 'copy' button located on back panel for easy file copying from computer to unit. (Additional software required.)

### Hardware Connections

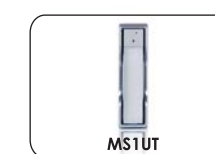


### Optional Accessories

The optional removable hard drive tray is available through Sans Digital. For maximum flexibility, the removable hard drive tray is made to be interchangeable between other Sans Digital MobileSTOR and MobileRAID units. Under JBOD mode, hard drive data can be easily be shared with other Sans Digital JBOD products.



### Other Sans Digital Products



- **3.5" Hard Drive Enclosure with Removable Tray**
- Dual host interface: USB 2.0 and eSATA.
- Supports High Performance SATA hard drives.
- Ultra quiet operation.
- Vertical placement stand included.
- Durable aluminum housing.
- Supports both Windows and Mac OS X.



- **2-Bay External RAID Enclosure**
- Hardware RAID design, supporting RAID 0, 1, JBOD, RAID, SAFE33, and SAFE55, with eSATA and USB 2.0 interfaces.
- Drive Interface: 3.5" x 2 SATA I/ SATA II hard drives.
- Hot-swappable removable tray.
- Data auto-rebuilding.
- Hard drive, fan and temperature failure detectors.



- **4-Bay External RAID Enclosure**
- Support JBOD for independent access up to four hard drives.
- 1394b x 2 (MS4B), eSATA x 4 (MS4T), USB 2.0 & Port Multiplier (MS4UM).
- Drive interface: 4 x 3.5" SATA I/ SATA II hard drives.
- RAID supported in MS4B (RAID 0) and MS4UM (software RAID 0, 1, 0+1, 5, 5+ spare in Windows).
- OS independent with plug and play capability.



- **5-Bay External RAID 6 Enclosure**
- Hardware RAID design, supports RAID 0, 1, 0+1, 3, 5, 6, JBOD & hot spare disk.
- SCSI Ultra 320 (MR5S1)/ USB 2.0, Firewire 800 and eSATA (MR5CT1).
- Drive interface: 5 x 3.5" SATA I / SATA II hard drives.
- Hot-swappable tray design.
- Hard disk, fan and temperature failure detectors.

T: 1.800.980.1988 F: 1.562.949.3328 E: INFO@SANSDIGITAL.COM W: WWW.SANSDIGITAL.COM