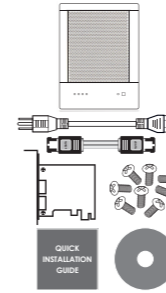




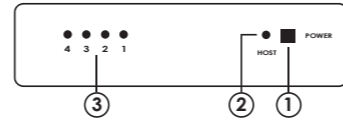
Package Contents

Item	Quantity
TR4M-BP/TR4MP	1
Power cord	1
eSATA cable	1
2-Port eSATA PCIe Adaptor	1
Screws	1 set
Quick Installation Guide	1
CD Manual	1

Please contact Sans Digital in case of any missing or damaged items.



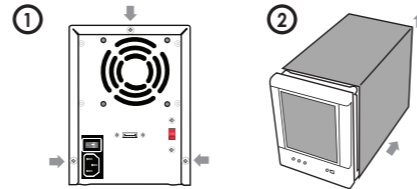
LED Indicators



- Power LED** - Lights when unit is powered on.
- PC Link LED** - Lights when unit is connected to computer.
- HDD LEDs** - Green: HDD is installed. Orange: HDD is being accessed.

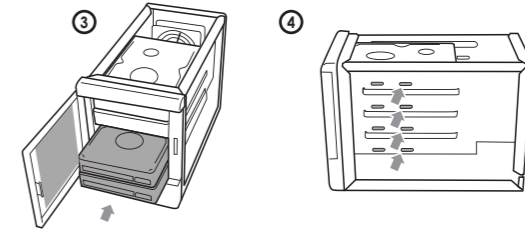
Hard Drive Installation

- Remove the tool-less screws on the back panel.
- Remove the upper chassis cover backwards and lift it upwards.



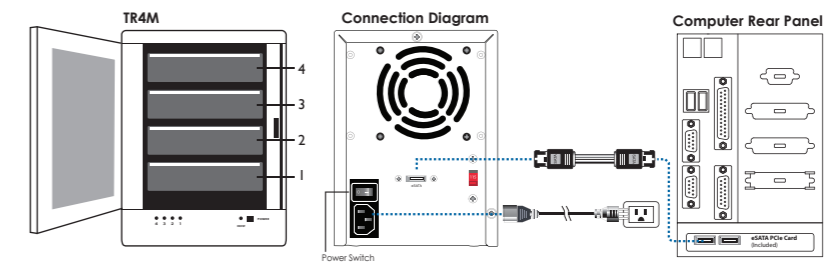
Hard Drive Installation (Continued)

- Open the front panel and install the HDDs from the top to the bottom.
- Fasten the tool-less screws to secure the hard drives.



- Close the front panel and the chassis cover, and fasten the tool-less screws on the back panel.

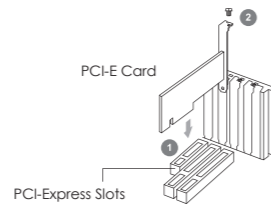
Hardware Connection Diagram



- Power ON/OFF: Switch the power button located in the back to power on/off.

Installing the PCIe Adapter Card to a Computer

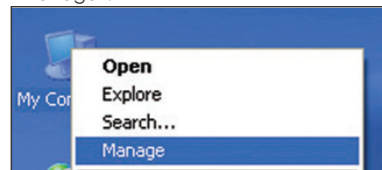
Insert the PCIe Card into an available PCIe slot on your computer Fig.3 (Step 1) and secure with screw (Step 2).



Windows System Installation

Step 1

From your desktop, point the cursor at "My Computer", right click and select "Manage".



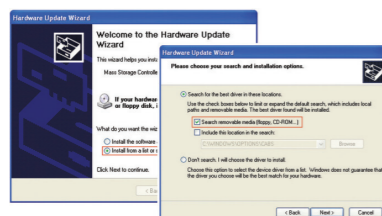
Step 2

Right click on "Mass Storage Controller" and select "Update Driver".



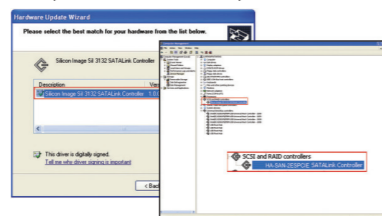
Step 3

Select "Manual Setup (Recommended Selection)", specify driver search from CD-Rom.



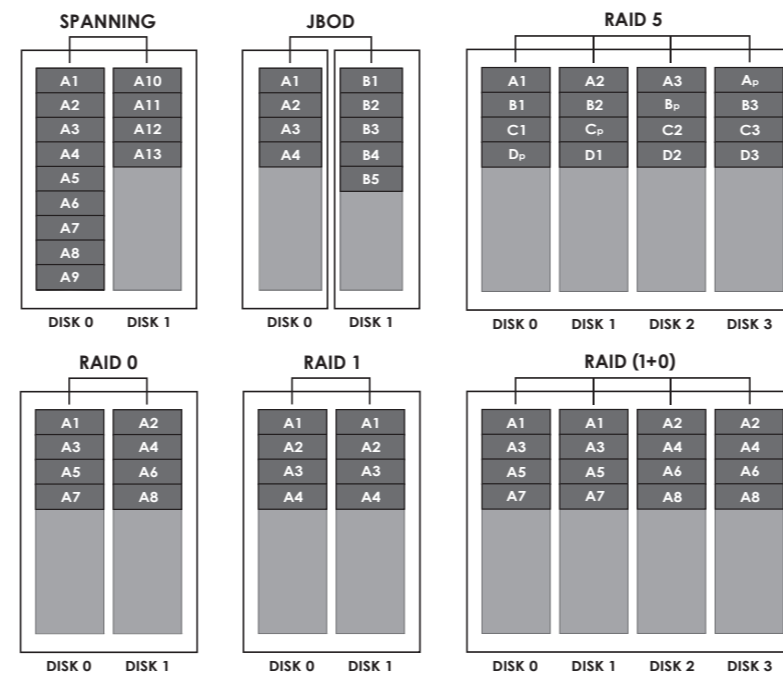
Step 4

Select the driver and begin installation process. After SATA card installation is completed, it will be ready for use.

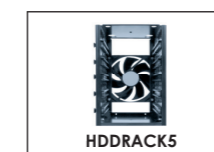


RAID Mode Setup and Diagrams

To setup RAID mode, please insert the included CD into the computer and install the Web GUI. Follow the installation instructions in the Detailed Manual to fully setup the desired RAID mode.



Other Sans Digital Products



HDDRACK5

- 5-Bay IDE / SATA Hard Drive Organizing Rack**
- Designed with a 4.7" cooling fan and a hollow aluminum frame for efficient heat dissipation.
- Designed with an ON/OFF power switch, which controls the power of hard drives, when a 20-pin or 24-pin ATX power supply is connected.
- Expandable to 10-bay by stacking an additional unit on top and securing it with a tool-less screw.



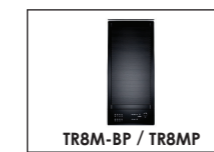
MS2UT+ / MS2UT+B

- 2-Bay External RAID Enclosure**
- Tray-less enclosure supporting RAID 0, RAID 1, JBOD and Spanning.
- Cable-less backplane design, supporting SATA I and SATA II HDDs.
- Easy access RAID mode switch on back panel.
- eSATA and USB 2.0 host interface.
- Ventilating protective front panel.
- Supports Windows, MAC and Linux.



TR4X-B / TR4X

- 4-Bay External RAID Enclosure**
- Access 4 hard drives while using only one cable.
- Supports SAS interface connection.
- Cable-less backplane design, supporting SATA I and SATA II HDDs.
- Supports Windows, Linux, and MAC OS X.
- Cable-less, tray-free design with dust cover.
- Available in black and silver finish.



TR8M-BP / TR8MP

- 8-Bay External RAID Enclosure**
- Two eSATA cables supporting up to 8 hard drives using Port Multiplier.
- Creates RAID 0, 1, 1+0 and 5 with spare supported via software utilities.
- Cable-less backplane design, supporting SATA I and SATA II HDDs.
- Bundled with 2-Port 6G eSATA PCIe 2.0 x1.
- Supports Windows, MAC and Linux.

T: 1.800.980.1988 F: 1.626.322.3878 E: INFO@SANSDIGITAL.COM W: WWW.SANSDIGITAL.COM