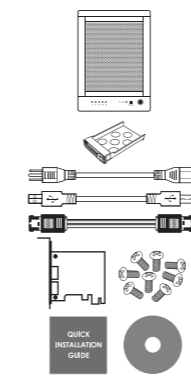




Package Contents

Item	Quantity
TR5UT-BP / TR5UTP	1
Removable Tray	5
Power Cord	1
USB 3.0 Cable	1
eSATA Cable	1
2 Port eSATA PCIe Adaptor	1
Screws	1 set
Quick Installation Guide	1
CD Manual	1

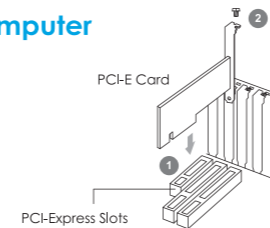
Please contact Sans Digital for missing or damaged items.



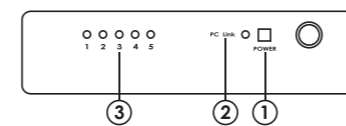
Installing PCIe Adapter Card to a Computer

Insert the PCIe Card into an available PCIe slot (x1 / x4 / x8 / x16) on your computer Fig.3 (Step 1) and secure with screw (Step 2). Both PCIe 1.0 & 2.0 are compatible, where 2.0 provides optimal performance.

Note: Please refer to CD for driver installation.



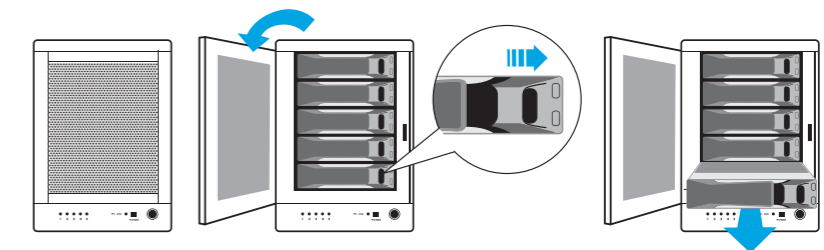
LED Indicators



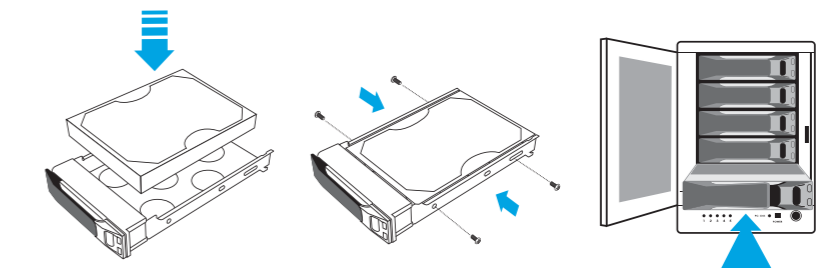
- Power LED** - Lights when unit is powered on.
- PC Link LED** - Lights when unit is connected to computer.
- HDD LEDs** - Green: HDD is installed. Blinking green: HDD is being accessed. Red: Error. Flashing red: Rebuilding.

Hard Drive Installation

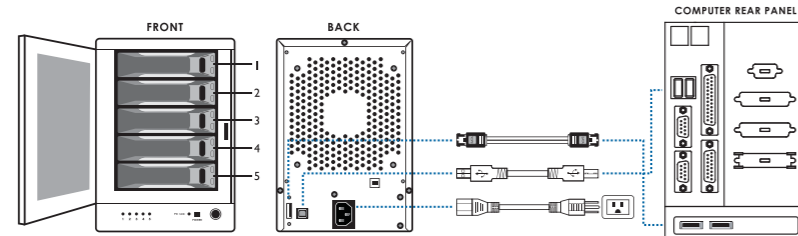
1. Open the front hard drive panel of the unit.
2. Remove the hard drive trays by pushing the silver tray tab to the right and releasing the tray handle.



3. Install each hard drive by placing them into the hard drive trays and securing them on both sides with the included screws.
4. Place the trays back into the unit and lock them in place by pushing the tray handles in.
5. Close the front hard drive panel.



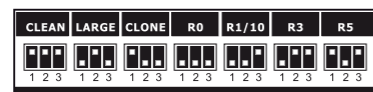
Connection Diagram



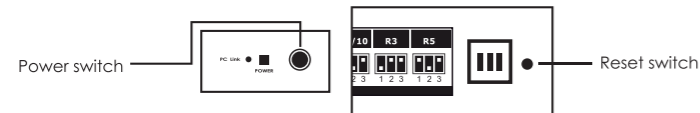
Power ON/OFF: Push the power button located on the front panel to power on/off the unit.

RAID Setup

1. Select the desired RAID mode by setting the RAID switch on the back of the unit.



2. Turn on the 'Power' switch while holding down the 'Reset' switch for 5 secs to complete RAID setup.

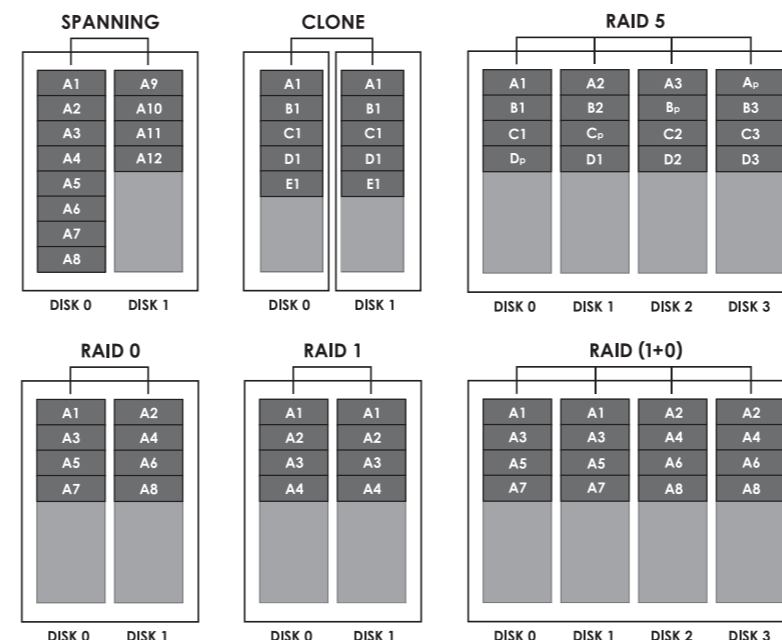


NOTE: All hard drive data will be erased during RAID setup.

NOTE: Hot-spare is supported for RAID 1, 1+0, 5, and Clone. Please see Detailed User's Manual for further instructions.

Optional RAID Monitoring Utility

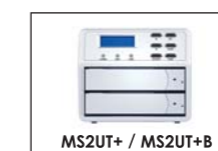
The unit is embedded with hardware RAID, where no additional software is required. Optional RAID monitoring utility is available for additional features such as email notification and firmware update. Please refer to the CD manual for details on RAID and advanced features.



Other Sans Digital Products



- 5-Bay IDE / SATA Hard Drive Organizing Rack**
- Designed with a 4.7" cooling fan and a hollow aluminum frame for efficient heat dissipation.
- Designed with an ON/OFF power switch, which controls the power of hard drives, when a 20-pin or 24-pin ATX power supply is connected.
- Expandable to 10-bay by stacking an additional unit on top and securing it with a tool-less screw.



- 2-Bay External RAID Enclosure**
- Tray-less enclosure supporting RAID 0, RAID 1, JBOD and Spanning.
- Cable-less backplane design, supporting SATA I and SATA II HDDs.
- Easy access RAID mode switch on back panel.
- eSATA and USB 2.0 host interface.
- Ventilating protective front panel.
- Supports Windows, MAC and Linux.



- 4-Bay External RAID Enclosure**
- Access 4 hard drives while using only one cable.
- Supports SAS interface connection.
- Cable-less backplane design, supporting SATA I and SATA II HDDs.
- Supports Windows, Linux, and MAC OS X.
- Cable-less, tray-free design with dust cover.
- Available in black and silver finish.



- 8-Bay External RAID Enclosure**
- Two eSATA cables supporting up to 8 hard drives using Port Multiplier.
- Creates RAID 0, 1, 1+0 and 5 with spare supported via software utilities.
- Cable-less backplane design, supporting SATA I and SATA II HDDs.
- Bundled with 2-Port 6G eSATA PCIe 2.0 x1.
- Supports Windows, MAC and Linux.

T: 1.800.980.1988 F: 1.626.322.3878 E: INFO@SANSDIGITAL.COM W: WWW.SANSDIGITAL.COM