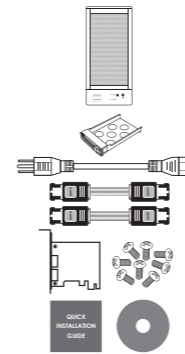




Package Contents

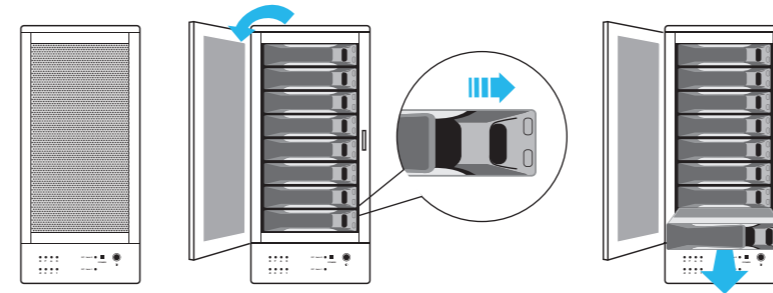
Item	Quantity
TR8M-BP/TR8MP	1
Removable Tray	8
Power Cord	1
eSATA Cable	2
2-Port eSATA PCIe Adaptor	1
Screws	1 set
Quick Installation Guide	1
CD Manual	1

Please contact Sans Digital in case of any missing or damaged items.



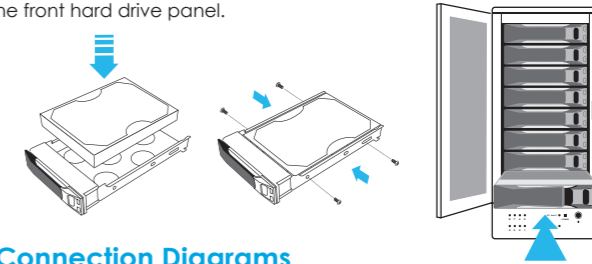
Hard Drive Installation

1. Open the front hard drive panel of the unit.
2. Remove the hard drive trays by pushing the silver tray tab to the right and releasing the tray handle.



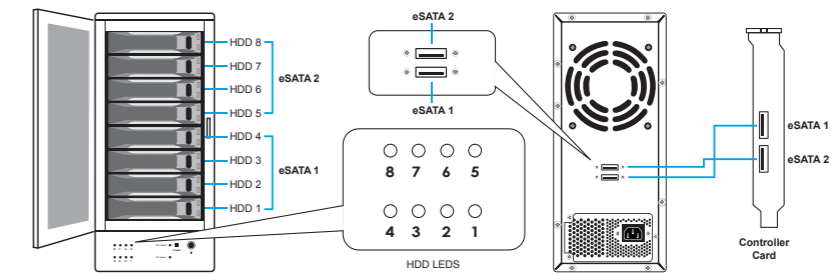
Hard Drive Installation (Continued)

3. Install each hard drive by placing them into the hard drive trays and securing them on both sides with the included screws.
4. Place the trays back into the unit and lock them in place by pushing the tray handles in.
5. Close the front hard drive panel.



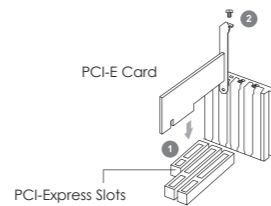
LED & Connection Diagrams

1. **Power LED** - Lights when unit is powered on.
2. **PC Link LED** - Lights when unit is connected to computer via eSATA port.
3. **HDD LEDs** - Green when HDD is installed. Orange when HDD is being accessed.



Installing the PCIe Adapter Card to a Computer

Insert the PCIe Card into an available PCIe slot on your computer Fig.3 (Step 1) and secure with screw (Step 2).



Windows System Installation

Step 1

From your desktop, point the cursor at "My Computer", right click and select "Manage".



Step 2

Right click on "Mass Storage Controller" and select "Update Driver".



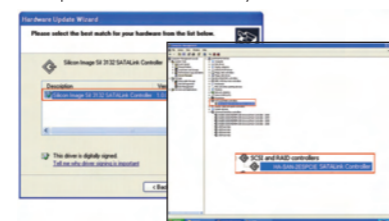
Step 3

Select "Manual Setup (Recommended Selection)", specify driver search from CD-Rom.



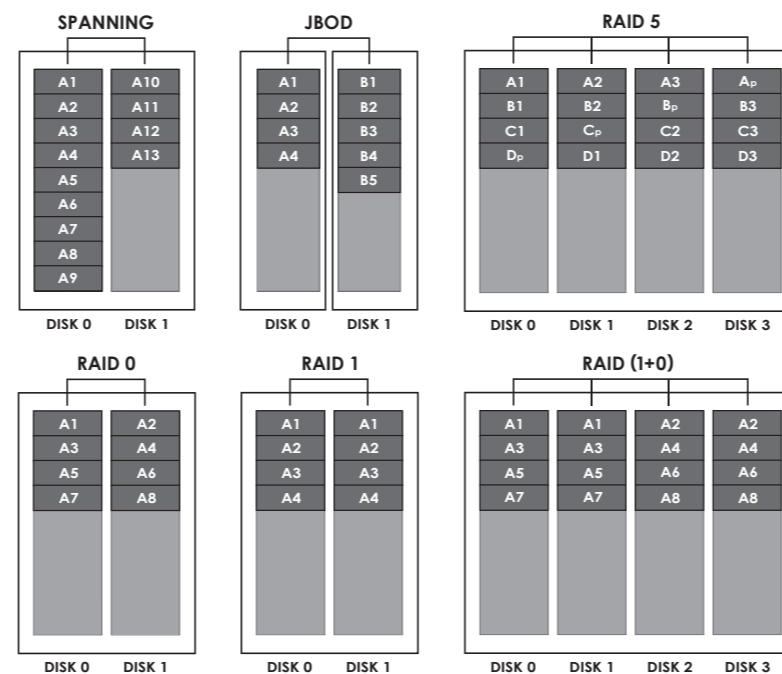
Step 4

Select the driver and begin installation process. After SATA card installation is completed, it will be ready for use.



RAID Mode Setup and Diagrams

To setup RAID mode, please insert the included CD into the computer and install the Web GUI. Follow the installation instructions in the Detailed Manual to fully setup the desired RAID mode.



Other Sans Digital Products



- **5-Bay IDE / SATA Hard Drive Organizing Rack**
- Designed with a 4.7" cooling fan and a hollow aluminum frame for efficient heat dissipation.
- Designed with an ON/OFF power switch, which controls the power of hard drives, when a 20-pin or 24-pin ATX power supply is connected.
- Expandable to 10-bay by stacking an additional unit on top and securing it with a tool-less screw.



- **2-Bay External RAID Enclosure**
- Tray-less enclosure supporting RAID 0, RAID 1, JBOD and Spanning.
- Cable-less backplane design, supporting SATA I and SATA II HDDs.
- Easy access RAID mode switch on back panel.
- eSATA and USB 2.0 host interface.
- Ventilating protective front panel.
- Supports Windows, MAC and Linux.



- **4-Bay External RAID Enclosure**
- Access 4 hard drives while using only one cable.
- Supports SAS interface connection.
- Cable-less backplane design, supporting SATA I and SATA II HDDs.
- Supports Windows, Linux, and MAC OS X.
- Cable-less, tray-free design with dust cover.
- Available in black and silver finish.



- **8-Bay External RAID Enclosure**
- iSCSI tower with 2Gb Ethernet, supporting RAID 6 and 60.
- Supports iSCSI jumbo frame, MC/s and Microsoft MPIO; up to 190MB/s.
- SCSI-3 compliant, supporting clustering server applications.
- Optional battery backup module.
- Supports Windows, MAC and Linux.

T: 1.800.980.1988 F: 1.626.322.3878 E: INFO@SANSDIGITAL.COM W: WWW.SANSDIGITAL.COM